



St. Peter's Catholic Primary School

Newsletter 07 Friday 06/12/24

www.st-peters-pri.gloucs.sch.uk
 admin@st-peters-pri.gloucs.sch.uk

Local Parish Mass Times	St Peter's	English Martyrs	St Augustine's
Saturday	6pm		6.30pm
Sunday	9am 10.30am 5.30pm	9am	11am

RE CURRICULUM

EYFS	I know that Jesus came for the world
Y1	Know how Christians celebrate Christmas today
Y2	Learning about the different ways Christians celebrate Christmas today
Y3	WALT Makes links between the angel's message about Jesus and the words of Isaiah
Y4	Understand the meaning and purpose of the Jesse Tree
Y5	Understand the meaning and purpose of the Jesse Tree
Y6	Understand the meaning and purpose of the Jesse Tree

Dear parents and carers,

We have had a lovely start to Advent. Thank you to Mrs MacDonald who led our Celebration of the Word on Monday. I would also like to thank Mrs Desando for preparing our Advent wreath. We often speak with the children about listening with love, speaking with love and acting with love here at St. Peter's. As we prepare ourselves for Jesus' return and get ready to celebrate his arrival – it is a wonderful time for us all to focus on the importance of being kind and inclusive. We have discussed this a lot in our assemblies this year and the children are a real credit in the way they treat each other.

We were delighted to welcome back Mrs. Baron for a visit to the school last Friday. She spent the morning visiting classes and speaking with children and staff. It was great to see Mrs. Baron. She is an important part of the school's celebrated history, and we look forward to seeing her again soon.

Our St. Peter's Christmas Fayre will take place tomorrow (Saturday 7th December) between 11.00am and 2.00pm. The PFA has worked hard to organise this event and we are grateful for their continued support. All of the money raised directly benefits the children in our school. Please support the school by joining us for some family fun!

Our Christmas lunch will be Wednesday 18th December 2024. All children are invited to eat together and will be joined by the staff team for lunch. Children are encouraged to wear Christmas jumpers/ dresses etc. on this day. We will be decorating the hall and providing child-friendly Christmas crackers. If you believe your child may be distressed by Christmas crackers, then please inform their class teacher as soon as possible and we will make sensible adaptations to support them.

Thank you to those parents who have provided feedback on the new draft behaviour policy; and thank you to the staff involved for their hard work in developing this. We will be sharing a draft policy to the governors for ratification and we are aiming to begin using this approach in the new term. We are really excited about the range of rewards and increased recognition for positive behavioural choices and looking forward to sharing this with children on our return.

Finally, thank you to parents and carers for working with the school to keep attendance high. Our current attendance levels continue to be above national average for primary schools. I appreciate that there is quite a lot of sickness going around at the moment: my daughter has been very unwell and off school for a few days. If your child is unwell then we will always encourage you to keep them at home. However, if they have a fever, a cough or a cold then the guidance is to send them into school. If they are not well enough or deteriorate we will call you to collect them. We care deeply about the welfare of pupils, and we will always call you to send them home if they are not well enough to continue with their learning.

Finally, thank you for your wonderful support and engagement with me in my first term here as Headteacher at St. Peter's Catholic Primary School. This is a truly wonderful school with amazing children and hardworking and dedicated staff. I am committed to working with all of you in our aim of becoming the best possible school we can be.

I would like to take this opportunity to wish you all a Merry Christmas and a Blessed New Year.

Mr. Kurt Doyle

★ St. Peters Catholic Primary School ★
★ Christmas Fayre ★

Meet Santa Raffle

Secret Shopping rooms

Refreshments

Games & prizes

Stalls

Festive Family Fun

And lots more

Saturday 7th December

11am-2pm



CASH ONLY

PREPARATION FOR ADVENT LITURGY

On Thursday 5th December KS2 took part in a Preparation for Advent Liturgy with Miss Baker for St Peters High School.

Linked in to Jubilee Year, the children were encouraged to turn away from the things they have done wrong and the poor choices that have been made, to make a fresh start and journey in peace with God.

It was lovely to see the children greeting Miss Baker with warmth and love. We love making links with our feeder secondary school.



Eco Council's Secret Shopping Room

Thank you so much for the incredibly generous Christmas present donations you have given! We have been blown away! We will be selling these wonderful gifts at the Christmas Fayre in our new secret shopping room. This is a room just for parents - bring a carrier bag to store your purchases in and grab yourself a bargain! All money raised in this room will go to charity.



Have an eco-friendly Christmas!



This Christmas, Learn Council would like you to:

REDUCE, REUSE, RECYCLE at Christmas.



REDUCE your use of single use items - especially wrapping paper.

REUSE items from last Christmas instead of buying new. For example - gift bags, cut up old cards or ribbons.

RECYCLE as much as you can. Make a choice to buy or use recyclable materials.



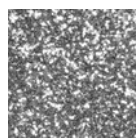
Eco (Learn) Council have been busy learning about and informing their class members about how to protect our environment over the festive period. It is important that we only use wrapping paper that can be recycled – this means no glitter and no shiny materials. Always try to use paper based wrapping paper that can be scrunched up into a ball. Why not have a go at making your own eco-friendly wrapping paper like the examples below?

40 million crackers are thrown in the bin each Christmas.



Did you know?

Glitter is a microplastic. It pollutes the air, ocean and soil. All glitter ever made still exists today.



The amount of wrapping paper used every Christmas is enough to wrap around the world 9 times.



Christmas Lunch

Wednesday, 18th December 2024



If your child has ordered a Christmas lunch, can we please remind parents that the cost of a meal is £2.71 which is paid through ParentPay and must be credited to their account before taking the meal.

Children can also wear their favourite Christmas jumper!



ST PETER'S NETBALL TEAM NEWS

This week St Peter's netball team played their final match of the group stages against Robinswood Hill. The teams were evenly matched at 1-1 after the first quarter. With the bitter cold impacting the accuracy of our passing and catching, the team had to dig deep and summon their fighting spirit. Despite there only being 1 goal separating the teams at half time St Peter's did not give up. With their incredible teamwork, determination and perseverance St Peter's ended up winning the match with a staggering score of 11-2!

This currently puts us at second in the league table. We will have to wait for the final scores from our division to come in before we know if we have made it into the quarter-final stages— fingers crossed for St Peter's!



'Pedal Eazy' by borrowing an e-bike

Residents are being invited to borrow an e-bike for up to three months in a new scheme to promote sustainable travel in Gloucestershire.

The 'Pedal Eazy' project was agreed by the county council following a budget amendment put forward by the Green Party at a meeting earlier this year. The scheme is being run by the council's Thinktravel team with the support of Gloucestershire Bike Project and Transition Stroud, and is open to anyone in the county.

The main aim of the Pedal Eazy Loan Scheme is to give people the chance to borrow an e-bike for up to three months and see how it can transform their travel and daily lives. Anyone aged 18 and over can borrow an e-bike through the scheme. To check availability and make a booking, contact [Transition Stroud](#) or [Gloucestershire Bike Project](#).

E-bikes are hired on a monthly basis, with a maximum hire period of three months. It costs £70 per month for standard rental and £30 per month for jobseekers. If you decide to purchase a bike or accessories, all hire fees are refunded in the form of a bike voucher to encourage continued cycling.

For more information on the project and support with getting going, visit: <https://www.thinktravel.info/cycling/pedal-eazy/>

HM Government

NHS

My Sore Throat Is Getting Worse
PHARMACY

Think pharmacy first

Sore throat? Your pharmacist can now provide treatment or some prescription medicine, if needed, for seven common conditions, without you seeing a GP.

Find out more: nhs.uk/thinkpharmacyfirst

See your pharmacist
Help us help you

Subject to age eligibility, including 8 years and over for sore throat prescription medicine. Service available at majority of pharmacies.

The second phase of NHS England's Pharmacy First Campaign has launched and assets are now available on the [Campaign Resource Centre](#).

The campaign aims to increase the public's awareness of the breadth of support community pharmacists can offer to patients on their doorstep. It focuses on the Pharmacy First service that allows pharmacists to provide some prescription medicine for seven common conditions, if needed, without the need to see a GP or prescription. The seven conditions are:

- Sinusitis (for those aged 12 years and over)
- Sore throat (for those aged 5 years and over)
- Earache (for those aged between 1 and 17 years old)
- Infected insect bite (for those aged 1 year and over)
- Impetigo (for those aged 1 year and over)
- Shingles (for those aged over 18 years old)

Uncomplicated urinary tract infections (UTIs) (for women aged 16-64)

It will also promote the ability to initiate or provide ongoing supply of oral contraception (the creative for which is awaiting Clinical approval).

The campaign seeks to demonstrate how the health service is making it more convenient for people to access care. It primarily targets working age adults (18-40) who may experience minor health conditions. It also targets ethnic minority groups and those with disabilities, to ensure it is addressing key health inequalities.

The campaign is running across England, with adverts on TV on Demand, on radio, in public spaces such as bus shelters, as well as adverts on relevant websites and search engines, online videos and social media, supported by PR and partnership activity until the end of December 2024.

Our [campaign toolkit](#) gives you all the information and resources you need to encourage your audiences to visit their community pharmacy. You'll find [social media videos and post copy](#), please visit again to download our latest [social media resources](#). We have a range of other assets available including [digital screens](#), [posters](#), [accessible formats](#), partner posters and our TV advert (with cut down versions) coming soon.

Thank you for supporting our Pharmacy First advertising campaign.

Other Help Us Help You campaigns

NHS 111

The NHS 111 campaign launched on 25 November to encourage people to use the 111 service when they have an urgent but not life-threatening medical need. Assets including a campaign toolkit, digital screens, social assets and posters are available to support the activity and can be found on the [Campaign Resource Centre](#).

A promotional graphic for the NHS 111 campaign. On the left, a photograph shows a man sitting on a bed in a hospital ward, holding a smartphone, with a young girl sitting next to him. The text 'Get to the help you need' is overlaid on the photo. To the right, a white box contains the text 'Use 111' in large blue letters, followed by 'If you need urgent medical help. Call, go online or use the NHS App.' Below this is the NHS logo and the 111 logo with the slogan 'Help us help you'.

Stay Well this Winter

We have also published our updated [Stay Well this Winter leaflet](#). It contains some important information from the NHS on how people can stay well this winter. Accessible formats will be uploaded shortly.



09:00
TO
15:00

HOLIDAY CAMPS

PER DAY

£20.00

£12.00
HALF DAY



**FUN &
CREATIVE
HOLIDAY
ACTIVITIES**

OUR CAMPS

- MULTI-SPORTS
- FOOTBALL
- ARTS & CRAFTS
- SINGING
- DANCE

✓ DBS CHECKED STAFF

✓ FULLY INSURED

WWW.SUPAFITSPORTS.CO.UK | CALL US 07854673716

DATES FOR THE DIARY

Saturday, 7th December	Whole School	Christmas Fayre	11am-2.00pm
Wednesday, 11 December	EYFS	Nativity	9.15am and 2.00pm
Thursday, 12th December	Whole School	Christmas Jumper Day	
Wednesday, 18th December	Whole School	Christmas Lunch	
Wednesday, 18th December	Whole School	Wear a Christmas Jumper	
Friday, 20th December	Whole School	Mass	9.00am—everyone welcome
Friday, 20th December	Whole School	Finish at 1.00pm	
Monday, 6th January	Whole School	INSET	
Tuesday, 7th January	Whole School	Start of the new term	8.45am

DINNER MENU – w/c 9th December

Monday	Tuesday	Wednesday	Thursday	Friday
Macaroni Cheese	Cowboy Casserole	Roast Chicken	Spaghetti Bolognaise	Breaded Fish
Vegan Plant Balls in Tomato Sauce	Cheese & Tomato Pizza	Vegan Quorn	Chinese Vegetable Curry	Cheese & Red Pepper Frittata
Jacket Potato	Jacket Potato	Jacket Potato	Jacket Potato	Jacket Potato

DINNER MENU – w/c 16th December

Monday	Tuesday	Wednesday	Thursday	Friday
Tomato Pasta	Sausage with Mash	Christmas Turkey	Beef Pasta Bake	Fish Fingers with chips
Mexican Fajitas	Creamy Curry	Sweet Potato & Parsnip Loaf	Baked Bean Hot Pot	Mexican BeanRoll
Jacket Potato	Jacket Potato		Jacket Potato	Jacket Potato

HOUSE POINTS

Our House Points totals for this week are:



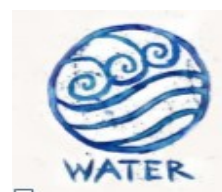
331



330



591



193

CONGRATULATIONS TO FIRE!